



CATBASE DATA CHAMELEON EDITION

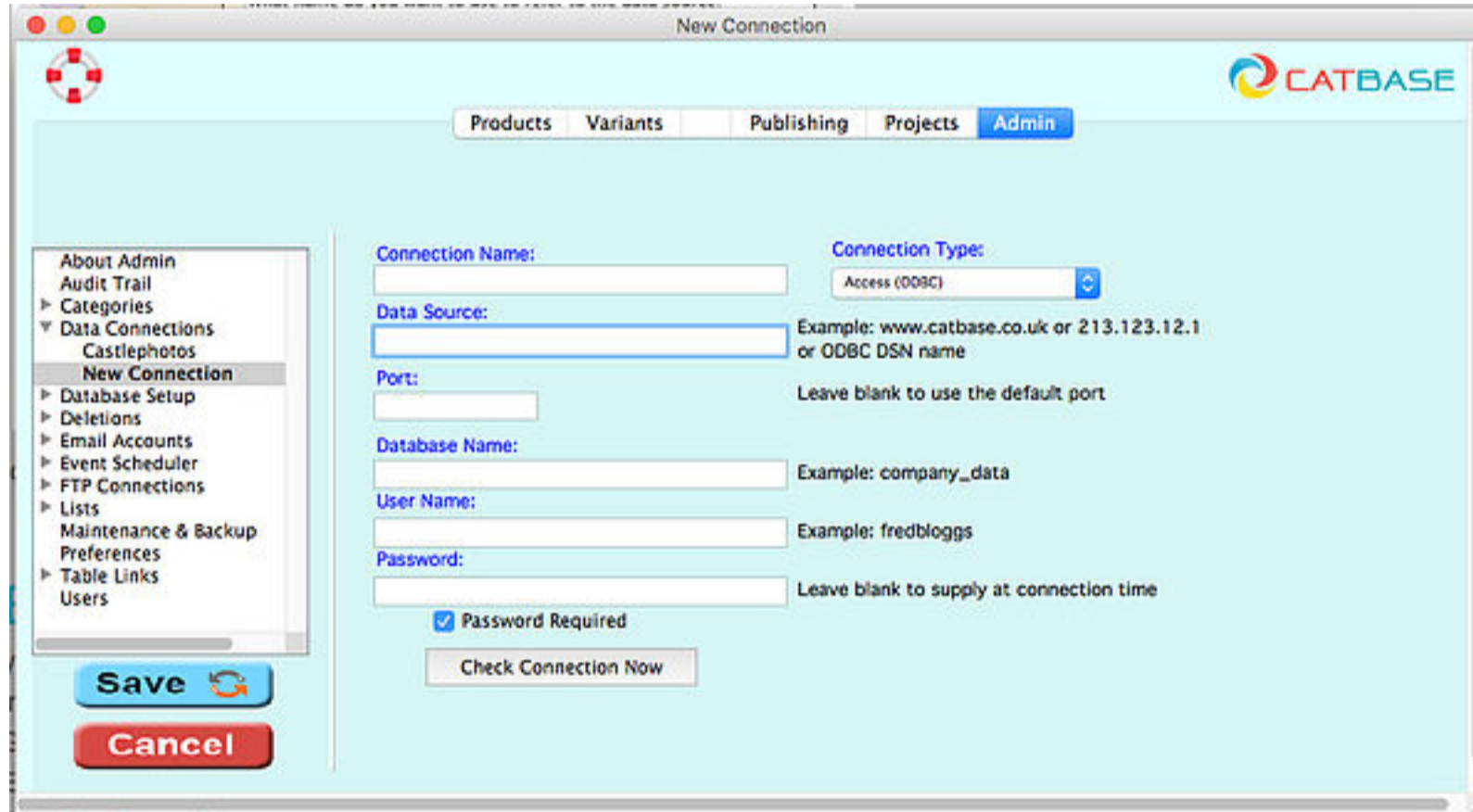
With CatBase Data Chameleon Edition you can easily extract data from, or publish it to, an ODBC-compliant data source such as Microsoft Sql Server, Excel, Access, or MySql.

It's simple to set up:

1. Set up a Data Connection to tell CatBase how to connect to your data source.
2. Set up an Import Style if you want to extract data from the data source, and/or
3. Set up a Publishing Style Sheet to publish your CatBase data to the data source

DATA CONNECTION

First, you set up a Database Connection (choose **Data Connections** from the **Admin** menu and click on the **New Connection** link):

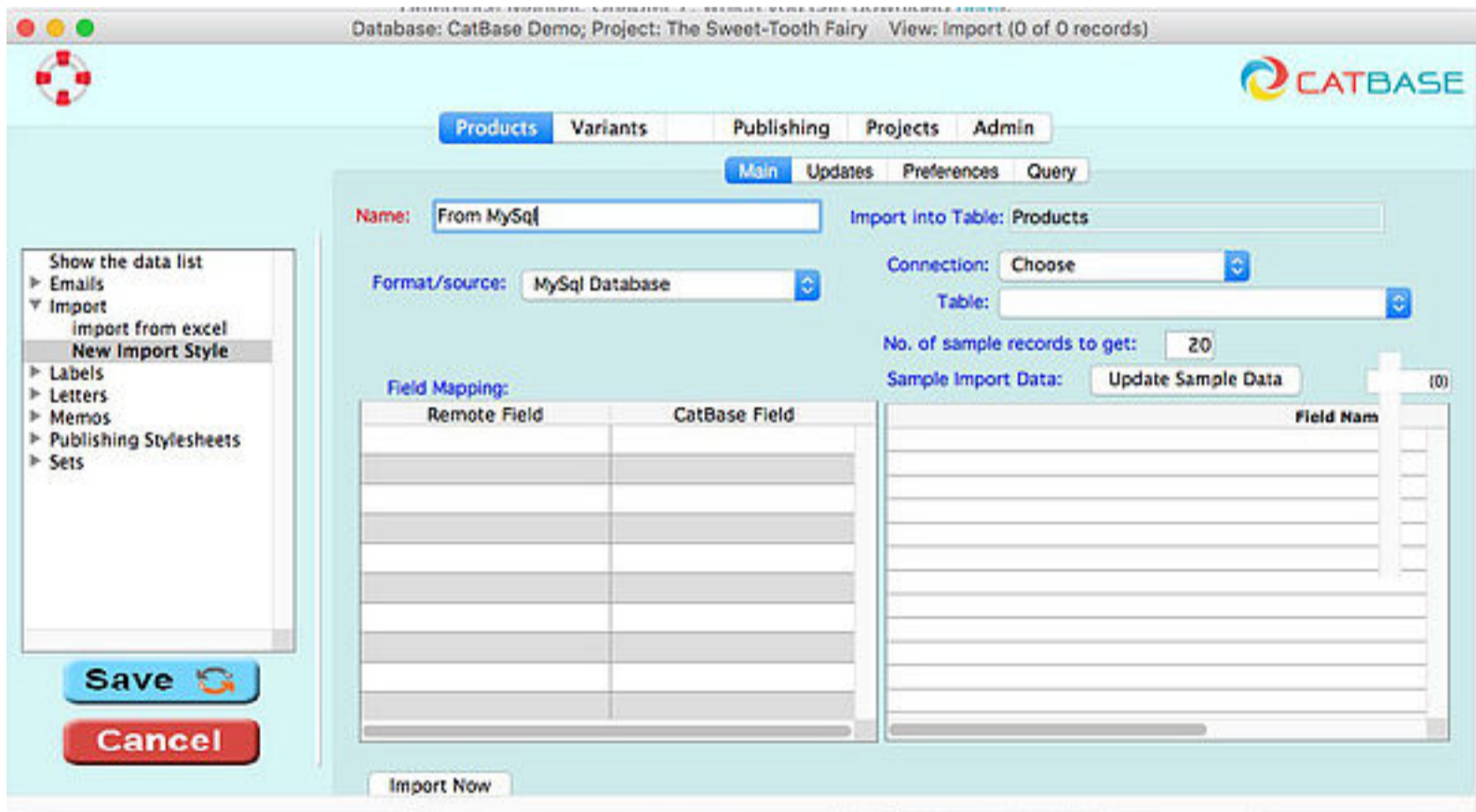


Note: if you are using CatBase on a Macintosh computer, you will need to install an ODBC driver and configure it. See the [Configuring an ODBC Driver](#) tutorial for more info.

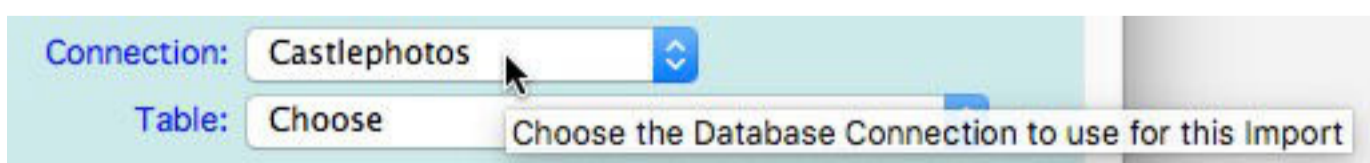
IMPORT DATA DIRECTLY FROM ANOTHER DATA SOURCE

Once you have created a Data Connection, you can then set up an [Import Style](#).

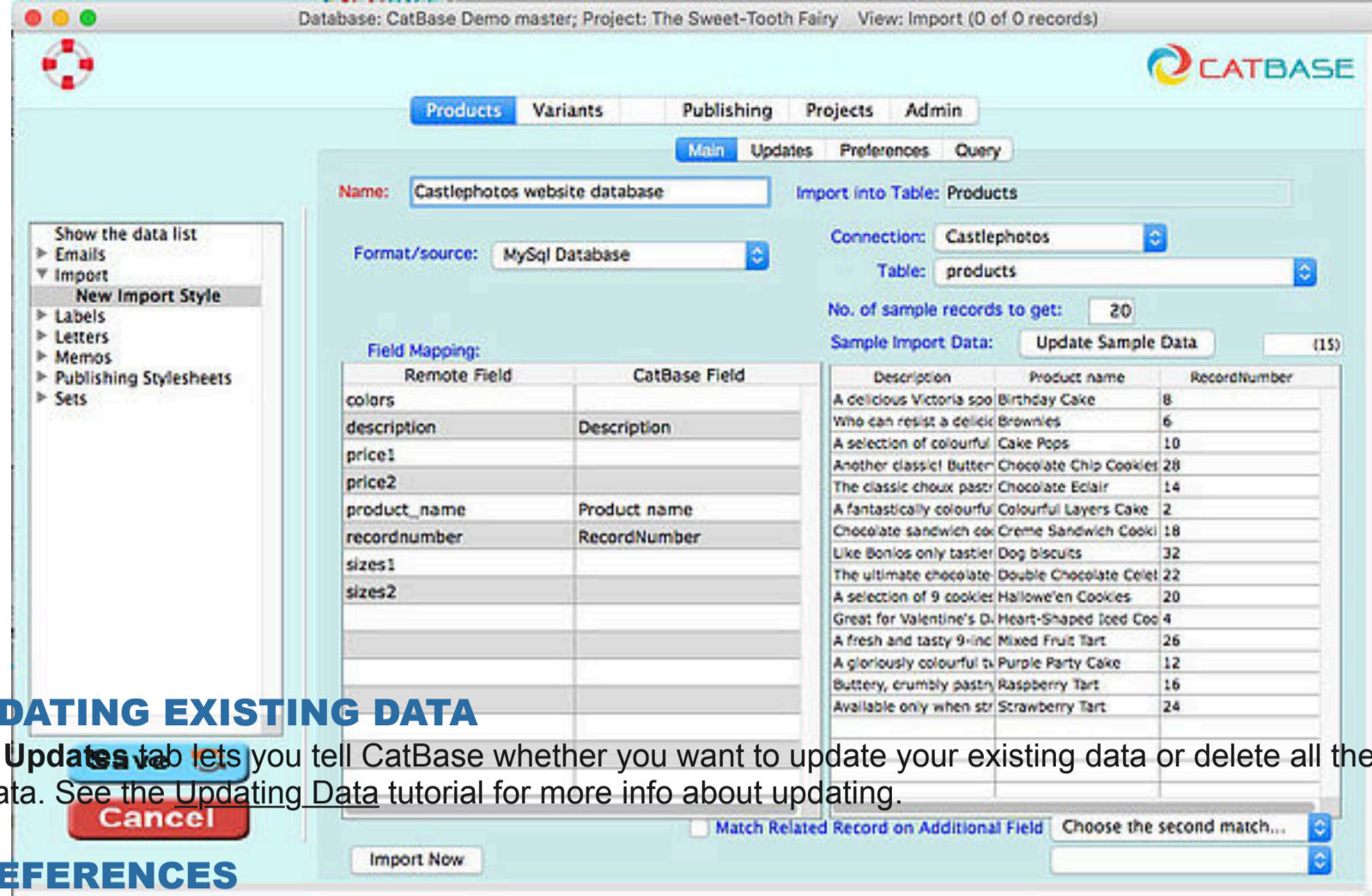
- Select the table that you want to import data into
- Expand the **Import** topic in the menus on the left
- Click on **New Import Style**
- Choose MySQL Database (or ODBC Data Source) as the **Format/Source**:



- Choose a database connection from the Connection popup:



- Choose the table that you want to import data from in the Table popup.
- Map the columns from the selected table to the fields in your CatBase table. For more detailed info about mapping fields, please see the [Importing Data](#) main tutorial.
- CatBase imports a few records and displays them for you:



UPDATING EXISTING DATA

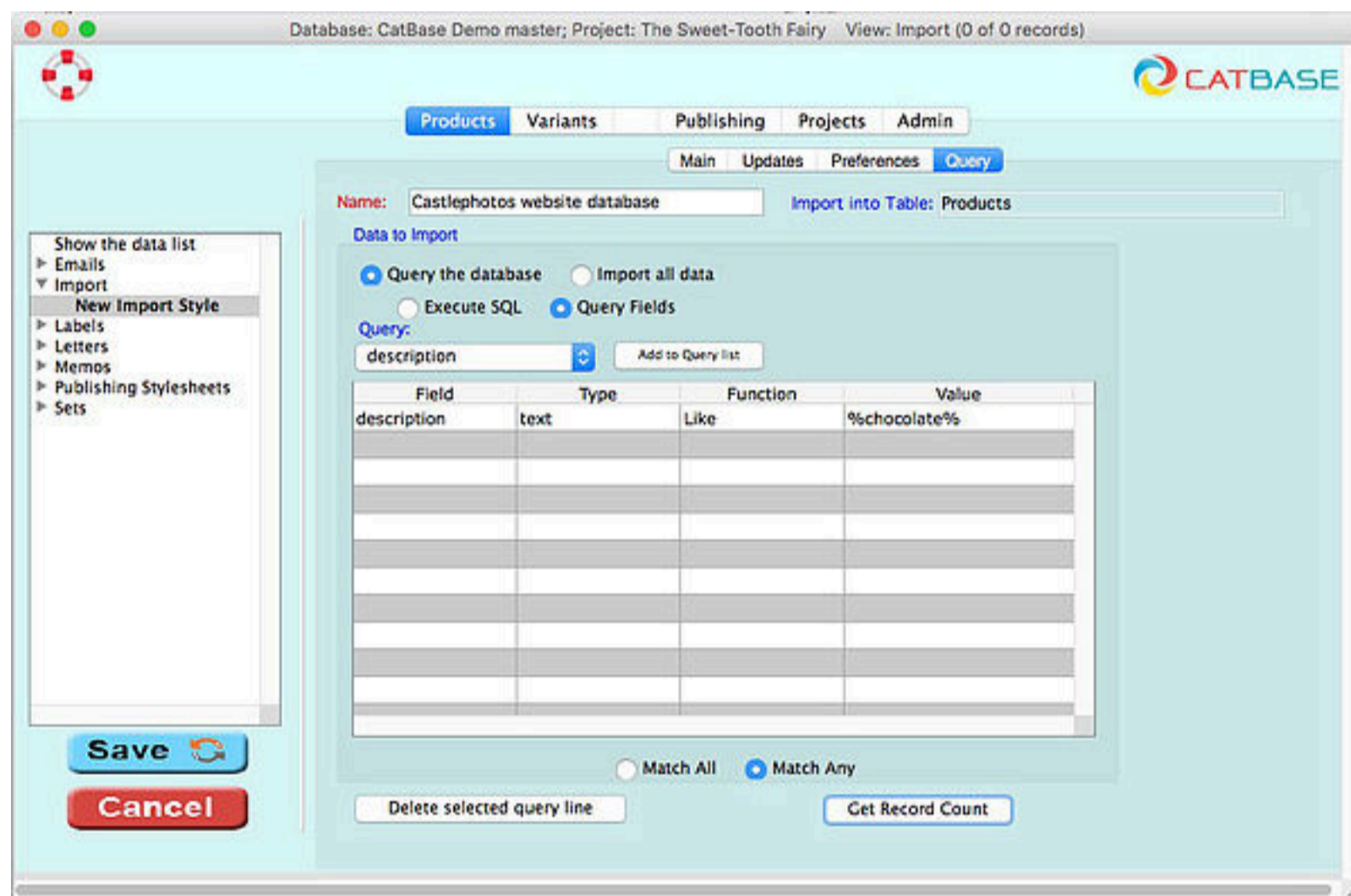
The **Updates** tab lets you tell CatBase whether you want to update your existing data or delete all the records in the table first and import a fresh set of data. See the [Updating Data](#) tutorial for more info about updating.

PREFERENCES

The **Preferences** tab lets you set various preferences for the data import, such as running a script and converting embedded style tags (see the [Importing Data](#) tutorial for more details).

QUERIES

The **Query** tab enables you to specify which data to extract:



Now all you need to do is go back to the **Main** tab and click the **Import Now** button!

Importing data can be automated via the [Event Scheduler](#) - for example, you can set it to automatically update itself from your data source every night.

Once you have imported the data, you can publish it in any number of different ways by setting up [Publishing Projects](#).

