



# Quick Start

## *Version 11*



# Contents

Quick Start.....	i
Version 11.....	i
What is CatBase?.....	1
Why use CatBase to create your publications?.....	1
Advantages of using CatBase: .....	1
Installing CatBase (Single-user and Trial versions).....	2
Macintosh .....	2
Windows .....	2
Demo Database, Documentation, and Examples.....	3
Starting up and Getting to Know CatBase.....	3
Entering a Licence Number .....	3
The CatBase Interface.....	4
1. The Main Tabs .....	5
2. The Button Bar .....	5
3. The Topics area .....	6
4. The Data List .....	6
Learning Resources .....	6
Publishing Project Examples .....	6
Getting Help.....	8



### What is CatBase?

CatBase is a database publishing application that will save you lots of time when creating publications such as:

- catalogues
- directories
- price lists
- classified ads
- ... or any sort of publication that's data-based.

You can use CatBase as your data management database, or you can import data into CatBase's database from another source such as a spreadsheet, delimited text file, XML file, MySql or SqlServer database.

You can publish your data to:

- A PDF
- A Microsoft Word document
- Adobe InDesign
- QuarkXPress

### *Why use CatBase to create your publications?*

With CatBase you can very quickly produce your publication from your data.

#### *Using a page layout program*

You'll need to have a licence (or a trial version) for InDesign or QuarkXPress and to know at least the basics of how to use it.

#### *Publishing Direct to PDF*

Instantly create your publication as a PDF! it can comprise various sections, such as:

- A cover page
- Introductory pages (such as "About us ...")
- The dynamically published data
- End matter (such as an order form, Terms & Conditions, etc.)
- An index

If you have any doubts about which publishing method will work best for you, please [contact us](#) for a free evaluation of your project.

### *Advantages of using CatBase:*

- **Save time:** CatBase handles most or all of the data formatting for you, so you don't need to spend hours, days, or even weeks organizing and styling your data.
- **Create various publications from the same data set:** Easily produce publications in different formats or with a subset of your data. For example, create:
  - Sale catalogues
  - Specialty catalogues
  - Customised reseller price lists

## Installing CatBase (Single-user and Trial versions)

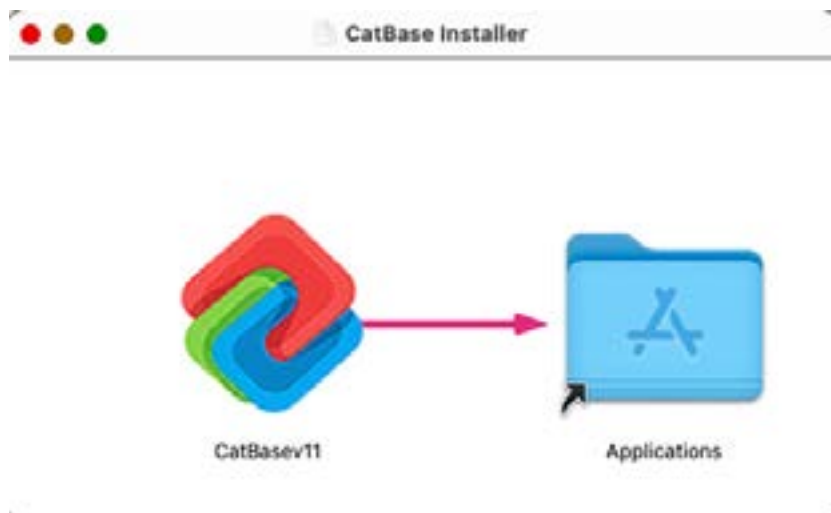


- **Conditional formatting:** Set up Rules to tell CatBase how to make decisions about what data to publish and/or how to style it. For example:
  - If a company has paid for an enhanced listing, include their logo
  - If they are a Charter member, set the company name in red
  - If it's a new product, publish a NEW PRODUCT! flash
  - *You can create Rules for all kinds of purposes!*
- Publish any number of **images** or **artwork**
- **Very flexible:** You define the tables, fields, and relationships that are needed for your project
- Manage multiple **Projects** within one database
- Produce personalised emails and letters
- Create labels (eg mailing labels, product labels, price tickets etc.)
- Create and publish bar codes and QR codes

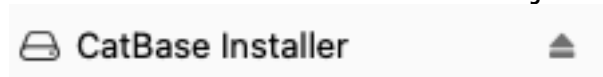
## Installing CatBase (Single-user and Trial versions)

### Macintosh

1. Double-click on the installer (CatBasev11 Single-User Installer.dmg)



2. Drag the CatBase icon and drop it into the **Applications** folder icon.
3. Close the installer window and eject the disk image:



4. Optionally, select the CatBase program icon in your Applications folder



then drag and drop it onto your Dock or your Desktop.

### Windows

1. Double-click on the installer (CatBaseInstaller.exe)
2. Follow the instructions in the installer.



### Demo Database, Documentation, and Examples

We have created an example database which contains several different projects, such as a Product Catalogue, Telephone Directory with White and Yellow Pages, a Parts Catalogue, and more. There are notes and other supporting documents for each project. You'll find everything in the **CatBase Examples and Docs** folder, which you can download from the [Downloads](#) page on our website.

### Starting up and Getting to Know CatBase

To start CatBase, double-click on the CatBase program icon. You might see a message like this:



To open the Demo Database or one that has already been set up for your project, click on the **Open an existing database** button. You'll find the CatBase Demo Database in the **CatBase Examples and Docs** folder.

If you want to create a new, empty database from scratch, click the **Create a new database** button. Enter a name for your new database, and then choose a suitable location to save it - eg in your Documents folder, or (we suggest) create a new folder specifically for your CatBase files, and save it in there.

### Entering a Licence Number

Next, you might see a dialog asking you for licence registration details:



Please take a moment to complete these registration details and then click the Submit button. Items shown in red are required.

☐ Licenced Version ☒ Trial Version

[Request a Trial Licence Number](#)

**Trial Licence Number**

**Company Name or Last Name**

**Telephone Number**

**Contact First** **Contact Last**

**Contact Email Address**

☐ Error Reporting

### ***Licenced Version***

If you have purchased a CatBase licence and received a Licence Number, select the **Licenced Version** radio button. The dialog will change and you can enter your licence number and other registration details.

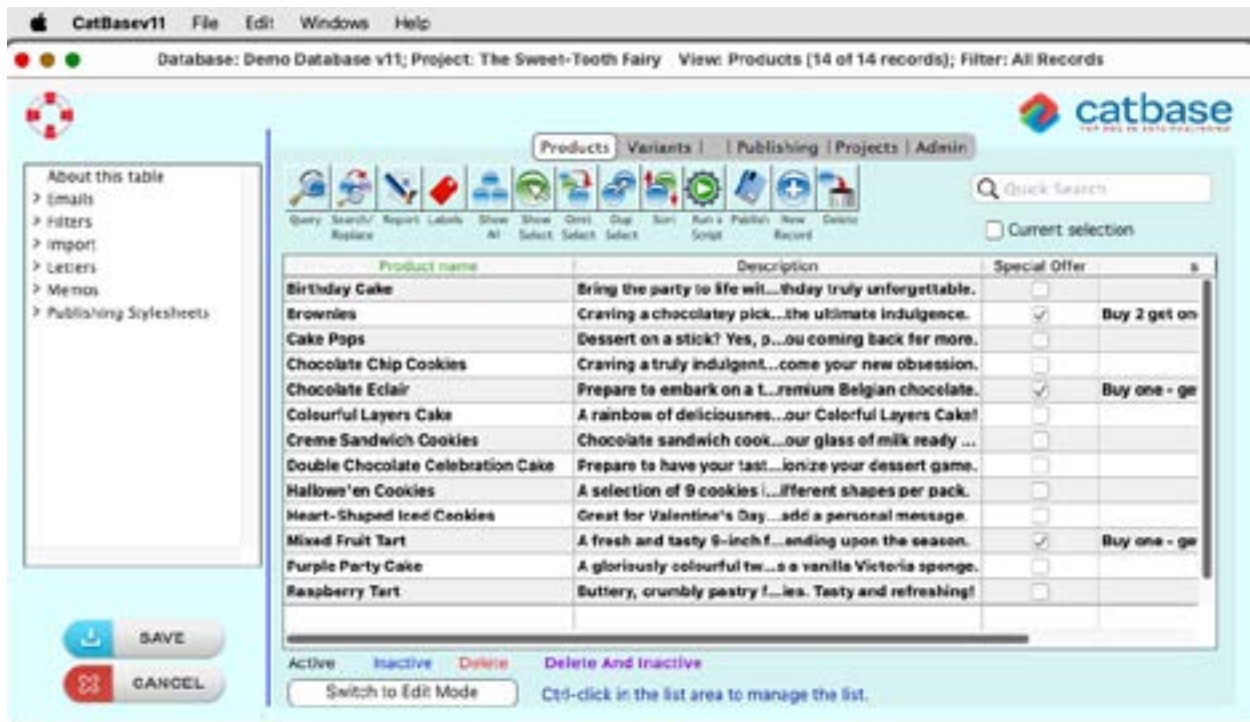
### ***Trial Version***

The Trial Version offers all the features of CatBase and has no time limit. It is however limited to 50 records per data table.

If you have received a Trial Licence number, enter it here; if you haven't, click the **Request a Trial Licence Number** button to get one.

### ***The CatBase Interface***

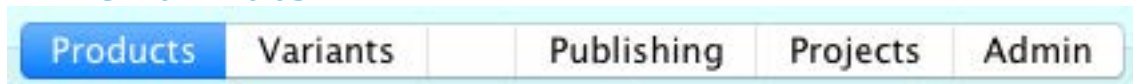
The CatBase window initially shows a list of the data in the default data table - for example, in the Demo Database it looks like this:



*The CatBase Main Window*

There are four main areas on this window:

## 1. The Main Tabs



These tabs provide access to the various content and options within the database. The tab bar is divided into two sections:

On the left are the data tables - in this example, there are two data tables named **Products** and **Variants**. These are your customised data tables, and they may be completely different in another database or Project.

On the right are options for managing your **Publishing** projects, other types of **Projects**, and various administration options and settings can be found under the **Admin** tab.

## 2. The Button Bar



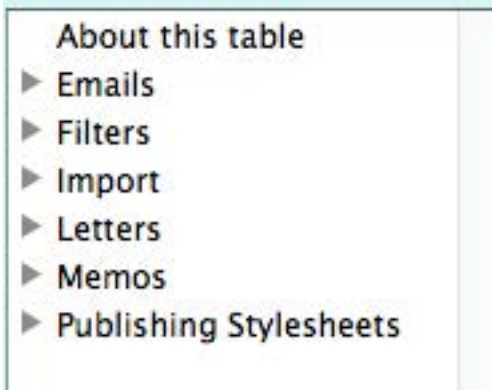
*These buttons provide quick access to various database operations.*

For detailed information about the Button Bar, [see this online Tutorial](#).





### 3. The Topics area



*Provides access to data management options for the selected data table.*

### 4. The Data List

Birthday Cake	Birthday Cake	:images:bl...y-cake.jpg	<input type="checkbox"/>	
Brown Brownies	Brown Brownies	:images:brownies.jpg	<input checked="" type="checkbox"/>	Buy 2 get one f
Cake Pops	Cake Pops	:images:cake-pops.jpg	<input type="checkbox"/>	
Chocolate Chip Cookies	Chocolate Chip Cookies	:images:c...cookies.jpg	<input type="checkbox"/>	
Chocolate Eclair	Chocolate Eclair	:images:eclair.jpg	<input checked="" type="checkbox"/>	Buy one - get o
Colourful Layers Cake	Colourful Layers Cake	:images:c...rs_cake.jpg	<input type="checkbox"/>	
Creme Sandwich Cookies	Creme Sandwich Cookies	:images:oreo.jpg	<input type="checkbox"/>	
Double Chocolate Celebration Cake	Double Chocola...elebration Cake	:images:choc-cake.jpg	<input type="checkbox"/>	
Hallowe'en Cookies	Hallowe'en Cookies	:images:h...cookies.jpg	<input type="checkbox"/>	
Heart-Shaped Iced Cookies	Heart-Shaped Iced Cookies	:images:v...cookies.jpg	<input type="checkbox"/>	
Mixed Fruit Tart	Mixed Fruit Tart	:images:fruit-tart.jpg	<input checked="" type="checkbox"/>	Buy one - get o
Purple Party Cake	Purple Party Cake	:images:party-cake.jpg	<input type="checkbox"/>	
Raspberry Tart	Raspberry Tart	:images:ra...rry-tart.jpg	<input type="checkbox"/>	
Strawberry Tart	Strawberry Tart	:images:st...rry-tart.jpg	<input type="checkbox"/>	

The selected table's data displayed in a list view. You can double-click any item to open the editing window and see all of that record's details.

To learn all about the CatBase interface, please see the [Interface Tutorial](#).

## Learning Resources

There are plenty of resources to help you learn how to use CatBase.

**Demo Database:** the Demo Database contains various projects that you can look at to see the different ways that CatBase can publish a variety of types of publication. Find the one that's closest to your own project and modify it, or create a new database and set it up yourself.

To see the various database projects, go to the **Projects** main tab and then expand the **Database Projects** topic on the left of the window. To switch to another Project, choose **Switch Project** from the **File** menu.

You might like to try one of the Publishing Projects to see how it works.

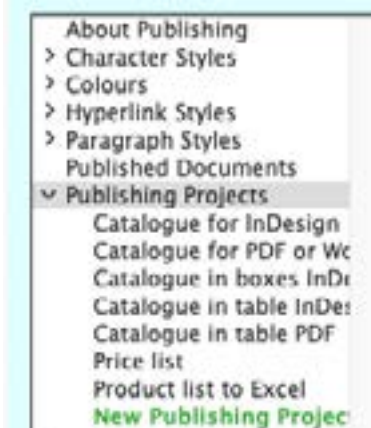
### Publishing Project Examples

To see the publishing examloes we've set up in the Demo Database:





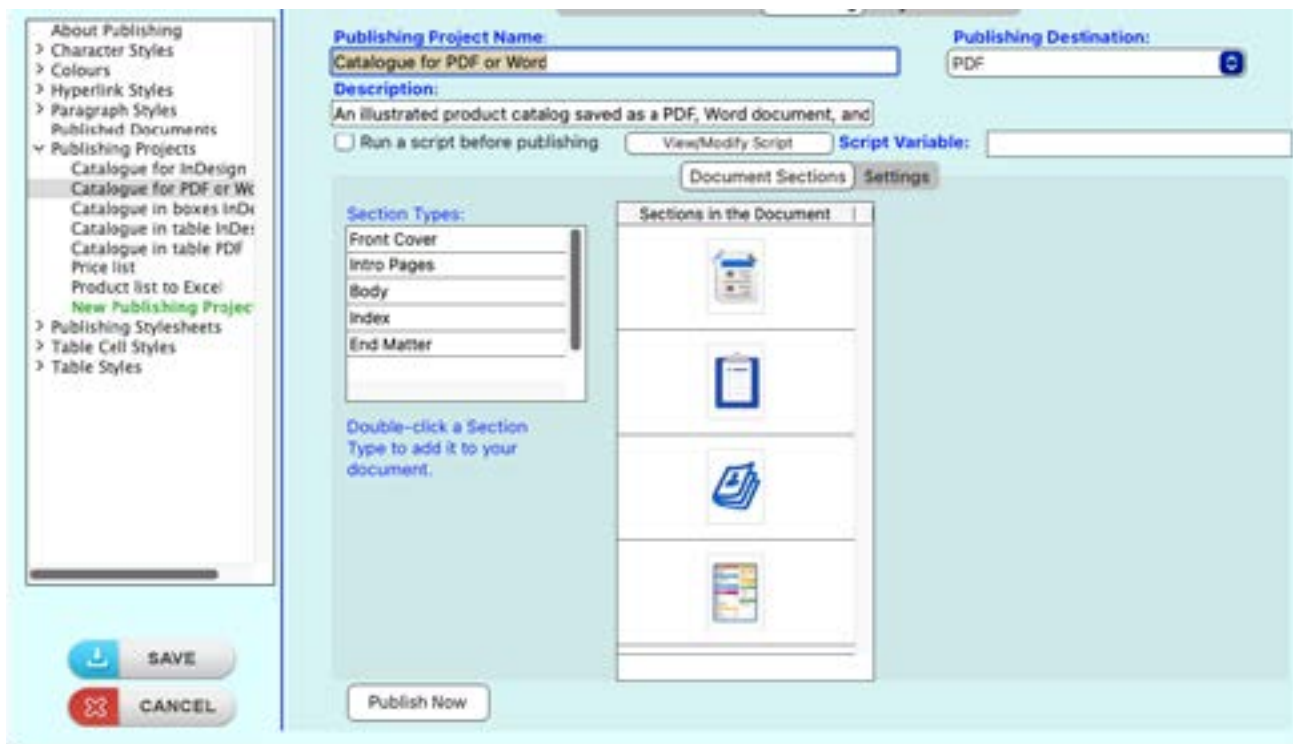
- Go to the **Publishing** main tab
- Expand the Publishing Projects topic on the left



### PDF Project Example

If you want to see a project published as a PDF and/or a Word document, select one of the example PDF Publishing Projects - for example:

- Select **Catalogue for PDF or Word**:



This Publishing Project comprises four Sections:

- A cover page
- An introductory page
- The body of the catalogue (the dynamically published data)
- An index

Click the **Publish Now** button.

CatBase creates the document and saves it both as a PDF and a Word .docx document. Find them in the Data Exports folder on your Desktop.



## Adobe InDesign Project Example

If you are going to be using InDesign to create your final publications, try one of the InDesign example Publishing Projects - eg:



The **Project Info** text explains how to use this example.

## Getting Help

**"About ..." Topics:** Select one of the **About ...** topics at the top of the topic list under the main tabs for information about the choices under that tab.



**Help Button:** Click on the Help button to see context-sensitive help and to search the help topics.

**CatBase Academy:** Check out [our online Tutorials in the CatBase Academy](#).

**Knowledgebase:** [Search the online Knowledgebase](#) or use the **Search** box at the top of every page on catbase.com to find answers to specific questions.

**Videos:** Find helpful videos on our [YouTube](#) channel.

If you can't find the answer to your question, [raise a support ticket](#).

If you have any questions about CatBase, or if you're not sure whether it is suitable for your project, [please contact us](#)! We will be happy to have a chat with you about your project. If you would like to book a free online consultation about your proposed project, or would like a free live online demonstration, please book a time slot [here](#)!